

Document version: 1 (03-02-2020)

Author: Dima Bulkin

Valid for BLE devices

## **PCBA Chip ID collecting and posting instruction**

Please, use bat file ("xxxxx.bat") for firmware loading during production process. Another software is prohibited because you will lose data with chip id.

The bat file ("xxxxx.bat") is provided with firmware in zip archive.

An example of the firmware downloading process is described in the "**Firmware downloading process**" part.

After uploading firmware, you have to send us information about all chip IDs of all programmed devices.

Based on provided Chip IDs we will activate programmed devices.

Information about Chip ID of all programmed devices is maintained in a folder with unzipped firmware files in the **«log.csv» file. This file appears after finishing firmware downloading.**

**This log file is constantly updated while you** program next devices (theirs chip ID information is adding in the same log file).

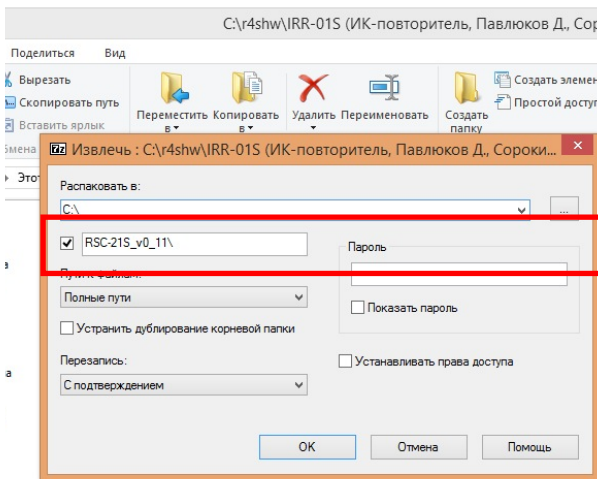
**After you finish mass production, the generated logs (from each workstation) must be sent to the following e-mails:**

[krutikhin.m@readyforsky.com](mailto:krutikhin.m@readyforsky.com), [d.bulkin@readyforsky.com](mailto:d.bulkin@readyforsky.com) [sales-China@readyforsky.com](mailto:sales-China@readyforsky.com) **and** [china@readyforsky.com](mailto:china@readyforsky.com)

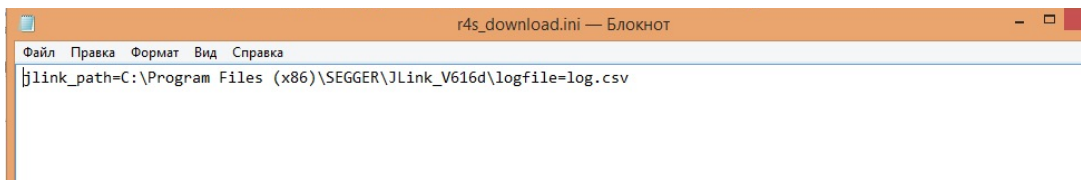
**Any loss of information about Chip ID is strongly prohibited because device buyers can't use it properly till it is activated by us remotely.**

**Firmware downloading process.**

**STEP 1** Please unpack into the **Root directory folder** the zip archive.



**STEP 2** Open file "r4s\_download. ini " and Change jlink path to the link path from step 4



Save file.

**STEP 3** connect jlink to debug SWD pads as its shown in the example below

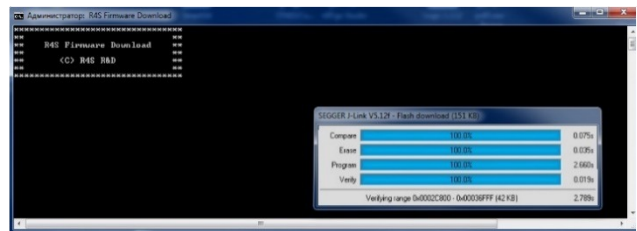


**STEP 4** Supply power from a previously connected laboratory power source.

**STEP 5** Browse folder with firmware and launch bat-file "**XXXXXX v. xx.bat**".

**Firmware uploading is starting automatically** and closed automatically **when process is finished.**

Имя	Количество	Имя	Размер	Дата	Тип	Атрибуты	Защищен	Интерпретация	Комментарий
...	70	...	...	...	...	...	...	...	...
...	42373	...	...	...	...	...	...	...	...
...	111 120	...	...	...	...	...	...	...	...
...	1706	...	...	...	...	...	...	...	...
...	111 120	...	...	...	...	...	...	...	...
...	48006	...	...	...	...	...	...	...	...
...	233	...	...	...	...	...	...	...	...
...	7106	...	...	...	...	...	...	...	...



## PCBA 芯片 ID 采集及发布教程

务必，请使用 bat 文件（"xxxx.bat"）在生产过程中加载固件。禁止其他软件否则将丢失芯片 ID。

该 bat 文档（"xxxx.bat"）与固件一同在 zip 包里提供。

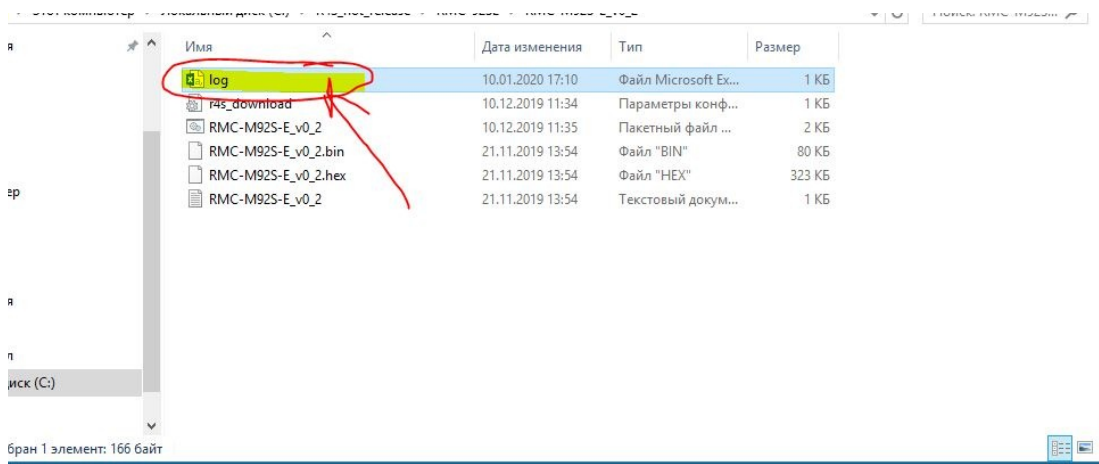
固件的下载过程的示例在“**固件下载过程**”部分中介绍。

下载固件后，您必须把所有的被编程设备的芯片 ID 信息发给我们。

根据提供的芯片 ID 我们会激活被编程的设备。

关于所有编程设备的芯片 ID 信息与未压缩的固件文档都维护在 **«log.csv»文档里**。该文档将在完成固件下载后出现。

该 log 文档将在你编程下一个设备后持续更新（其芯片 ID 信息将被添加到一样的 log 文档里）。

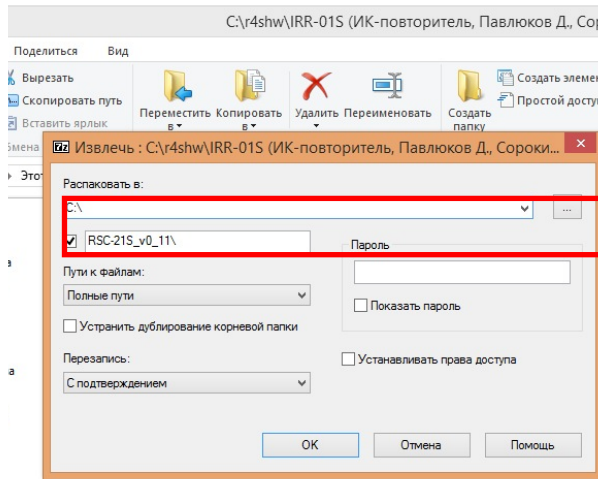


在你完成量产后，（从每个工作站）产生的 **logs** 必须发到下列邮箱：  
[krutikhin.m@readyforsky.com](mailto:krutikhin.m@readyforsky.com) [d.bulkin@readyforsky.com](mailto:d.bulkin@readyforsky.com); [sales-China@readyforsky.com](mailto:sales-China@readyforsky.com) 及 [china@readyforsky.com](mailto:china@readyforsky.com)

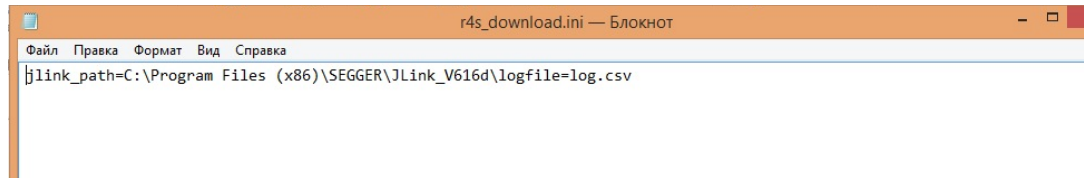
**严禁丢失任何芯片信息因为用户将在我们远程激活以前无法正常使用。**

## 固件下载过程

**步骤 1** 请将 zip 压缩包解压到根目录文件夹。

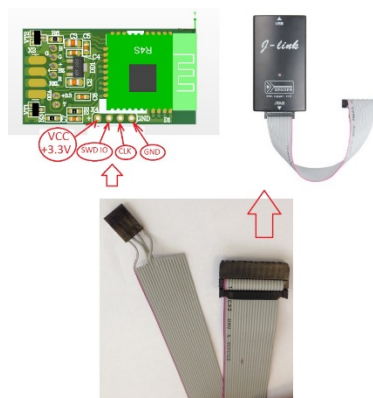


**步骤 2** 打开 “r4s\_download.ini” 并更改 jlink 路径为步骤 4 保存的文件的路径。



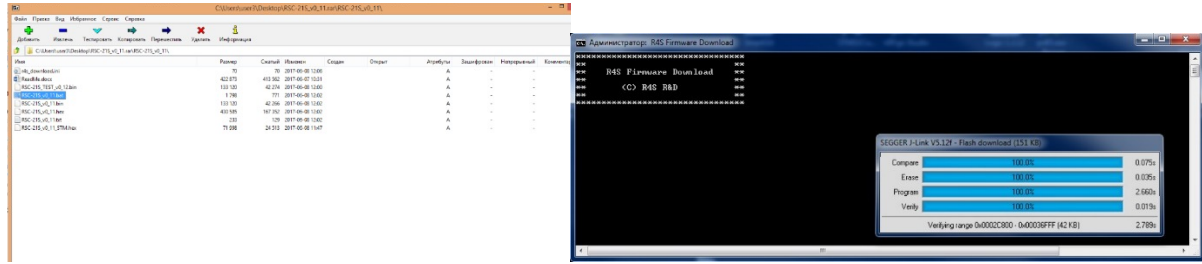
保存文件。

**步骤 3** 如下样例连接 jlink 到排故 SWD 平板。



**步骤 4** 由先前连接的实验室电源供电。

步骤 5 浏览固件文件夹并运行批文件”XXXXXX v. xx.bat”。



固件上传自动启动及操作完成后自动关闭。